



POLITECNICO DI MILANO | POLITECNICO DI TORINO



***ALTA SCUOLA  
POLITECNICA***



# ASP IN A NUTSHELL

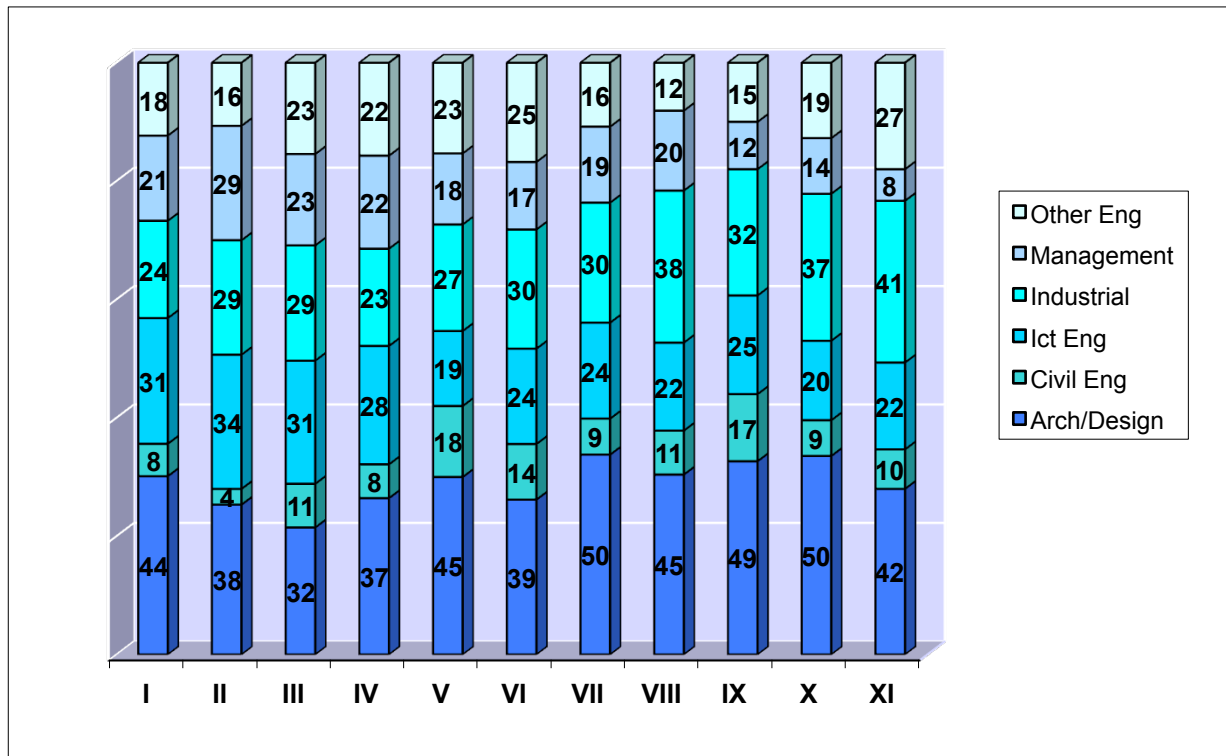
- **WHO** -- 150 talented students per year, selected among the best applicants to the Master programs in Architecture, Design and Engineering
- **WHAT**-- Additional track parallel to master studies
- **WHY**-- Emphasize horizontal skills, management of complexity, working in teams
- **WHEN** -- Established in 2004, two-year study cycle, 11<sup>th</sup> cycle starting in 2015
- **WHERE** -- PoliMi and PoliTo in joint venture

# ADMISSIONS, 2007-2015

CYCLE	APPLICATIONS		ADMITTED STUDENTS		INTERNATIONAL STUDENTS		TOTAL INTERNATIONAL STUDENTS
	MILANO	TORINO	MILANO	TORINO	MILANO	TORINO	
IV (2007)	174	110	83	57	18	8	26
V (2008)	251	230	90	60	28	11	39
VI (2009)	293	200	90	59	22	13	35
VII (2010)	240	255	90	59	26	8	34
VIII (2011)	219	146	90	57	19	8	27
IX (2012)	379	210	90	60	23	7	30
X (2013)	291	166	90	59	14	6	20
XI (2014)	412	123	90	60	29	9	38

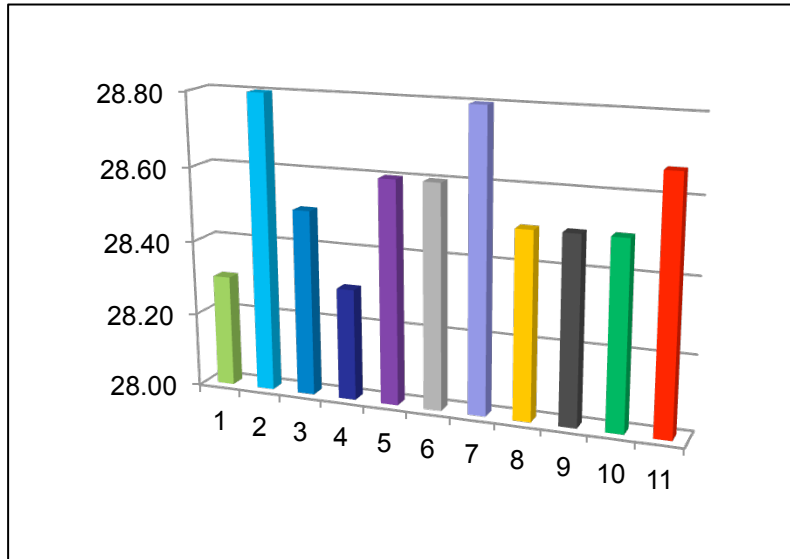
# ASP COMMUNITY

## ASP Students degrees in the 11 Cycles (2004-2015)



Over 1/3 women

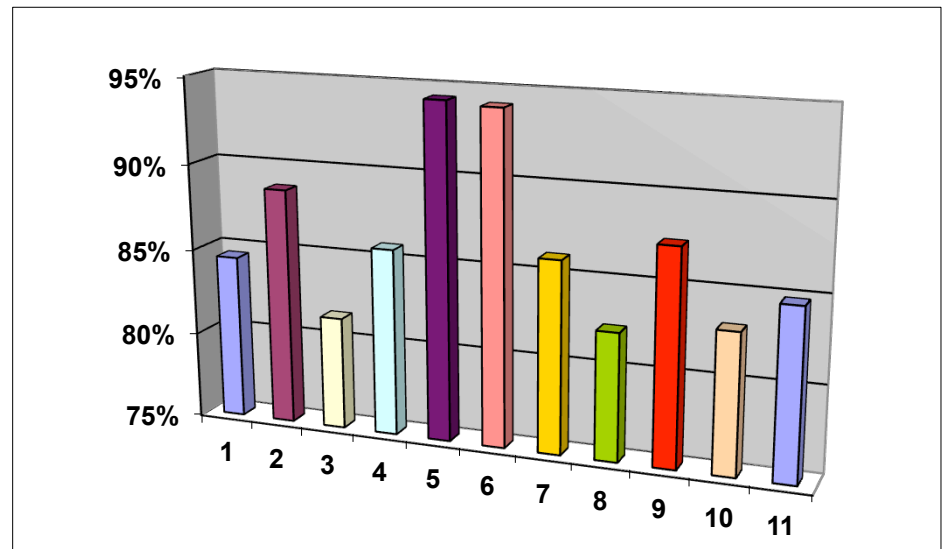
# QUALITY (1st – 11th CYCLE)



Average BSc mark  
of Italian ASP  
students  
~ 28,7/30



Average fraction of  
Italian ASP students  
with 110 or 110L BSc  
degree ~ 85%



# WHERE DO ASP STUDENTS COME FROM?





# THE ASP VISION

Support **bright students**  
in designing **smart solutions**  
to **complex problems**

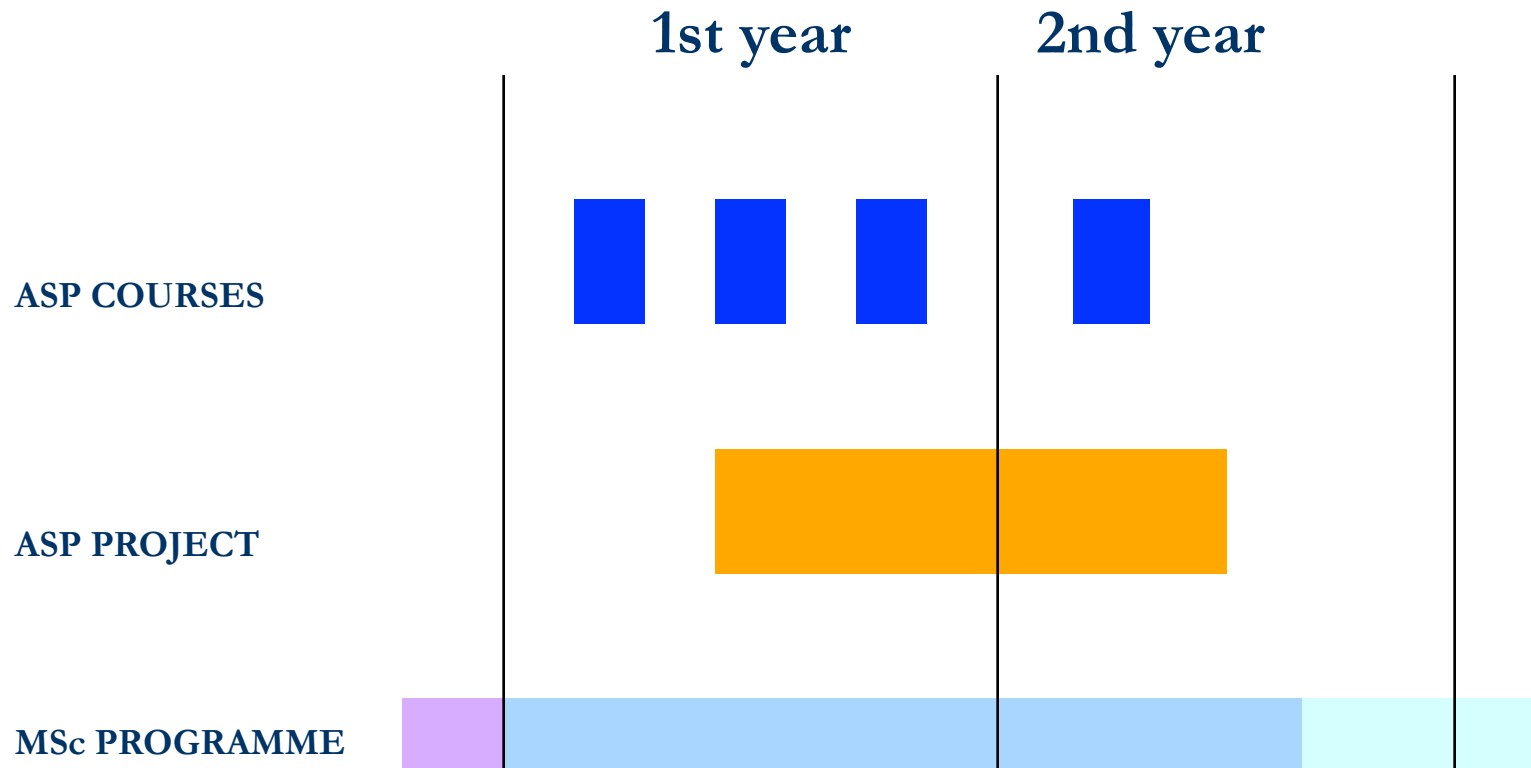


# Cultural Project

- Supporting students in designing solutions to complex problems, coping with dynamic environments which require:
  - cognitive capacities and aptitude to learning
  - capacity to manage organizational processes
  - awareness of the interests and the interactions that take place within the specific context
  - flexibility in adapting to the cognitive processes used during the design process
  - talent for interpersonal relations



# ASP TIMELINE





# COURSES

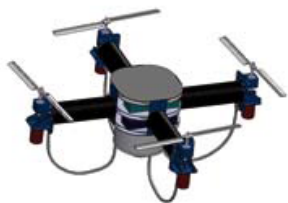
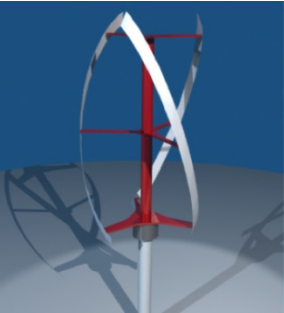
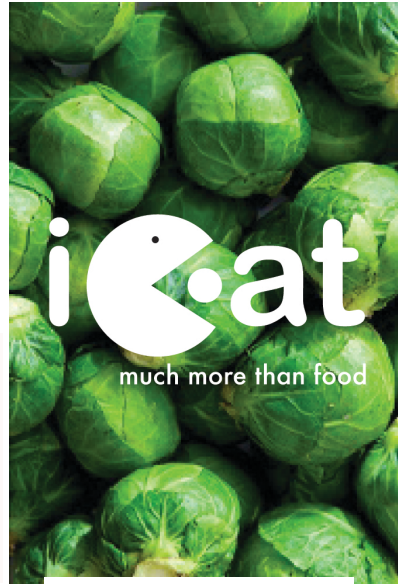
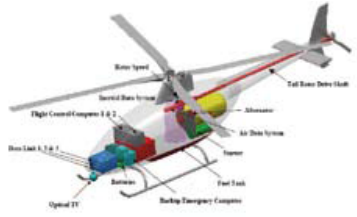
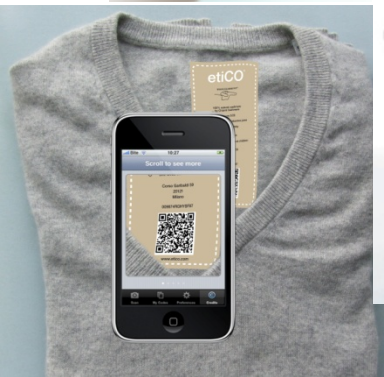
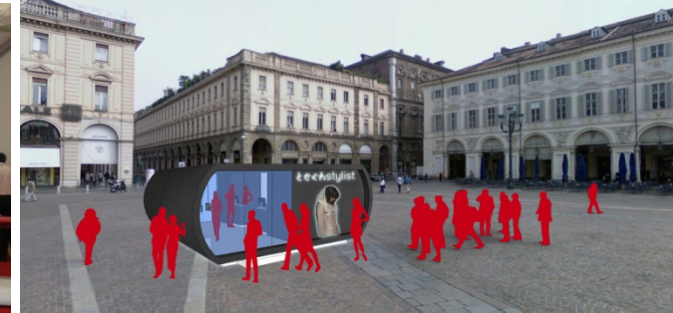
**DYNAMICS OF INNOVATION**

**DESIGN METHODS AND PROCESSES**

**DECISION MAKING: ECONOMY, SOCIETY, POLITICS**

**«WHAT'S NEW»**

# PROJECTS



# ALUMNI ASSOCIATION



- Created officially in June 2007, 800 members
- **Mission:** facilitate *networking* among ASP Alumni, support the professional and personal development of ASP Alumni, enhance ASP visibility
- **Activities**
  - Alumni Days/Events (2/year)
  - Newsletter
  - Placement poll
  - Tutoring
  - Many other opportunities of interaction with ASP students